

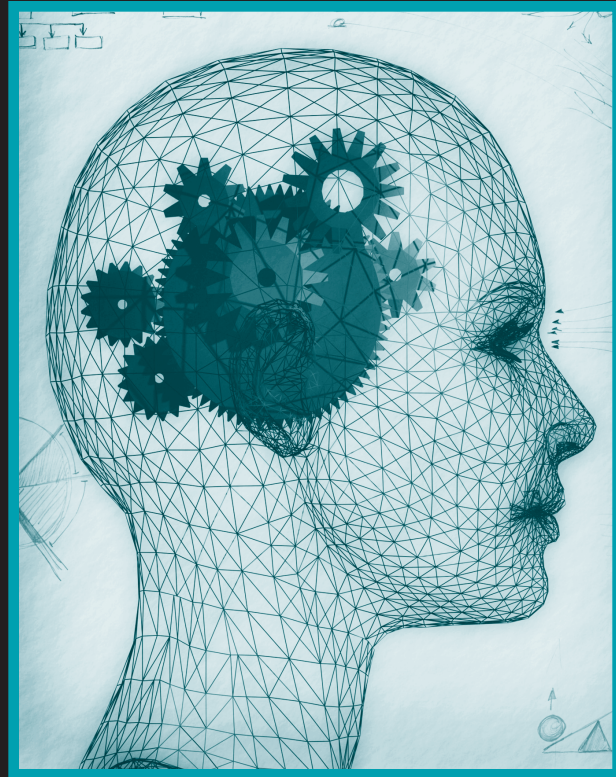
UNIVERSITY OF KANSAS MEDICAL CENTER  
Parkinson's Disease and Movement Disorder Center  
3599 Rainbow Boulevard, Mailstop 3042  
Kansas City, KS 66160



**movement  
disorder**  
review course  
Colorado Springs, Colorado

## THE UNIVERSITY OF KANSAS MEDICAL CENTER

Department of Continuing Education  
and Professional Development  
Presents



# movement disorder

review course

**JUNE 2, 2018**

Marriott Colorado Springs  
Colorado Springs, Colorado

## program

**SATURDAY June 2, 2018**

- 8:00 am **REGISTRATION AND  
CONTINENTAL BREAKFAST**
- 8:30 **DIFFERENTIAL DIAGNOSIS  
OF PARKINSONISM**
- 9:10 **PARKINSON'S DISEASE:  
CURRENT AND FUTURE THERAPIES**
- 10:15 **NON-MOTOR FEATURES OF  
PARKINSON'S DISEASE**
- 10:40 **BREAK**
- 10:50 **RESTLESS LEGS SYNDROME**
- 11:10 **TREMOR DISORDERS**
- 11:30 **PSYCHIATRIC ASPECTS OF  
MOVEMENT DISORDERS**
- 12:05 pm **QUESTIONS AND ANSWERS**

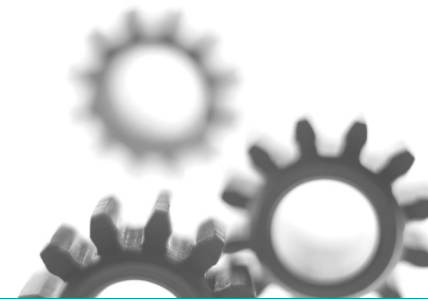
movement disorders

- 12:25 **BUFFET LUNCH PROVIDED**
- 1:05 **HYPERKINETIC DISORDERS:  
DYSTONIA**
- 1:45 **HYPERKINETIC DISORDERS:  
CHOREA AND TICS**
- 2:15 **DEEP BRAIN STIMULATION  
FOR MOVEMENT DISORDERS**
- 2:50 **QUESTIONS/ANSWERS  
AND CASE PRESENTATIONS**
- 3:15 **ADJOURN**

**PLEASE FEEL FREE TO BRING  
CASES FOR DISCUSSION**

## conference location

**Marriott Colorado Springs**  
5580 Tech Center Drive  
Colorado Springs, CO 80919  
719-260-1800



# general information

## OVERVIEW

Movement disorders have become a defined sub-specialty of neurology. Movement disorders include Parkinson's disease and other forms of parkinsonism, essential tremor and other tremor disorders, restless legs syndrome, Tourette syndrome, tics, dystonia, Huntington's disease, tardive disorders and other hyperkinetic disorders.

The differential diagnosis and treatment of the various movement disorders can be a challenge. In addition to controlling motor symptoms, it is important to recognize and treat the non-motor and psychiatric aspects of these disorders. This course will review the diagnosis and treatment of motor and non-motor symptoms of movement disorders, including the use of pharmacological interventions, botulinum toxin injections and deep brain stimulation.

## TARGET AUDIENCE

This program is designed for physicians in practice and training as well as other health care professionals caring for persons with movement disorders.

## LEARNING OBJECTIVES

Upon completion of this workshop, participants should be able to:

- Diagnose various parkinsonian syndromes
- Evaluate pharmacological treatment options for Parkinson's disease
- Identify the non-motor symptoms related to Parkinson's disease
- Recognize and diagnose restless legs syndrome and evaluate treatment options
- Differentiate various tremor disorders and select appropriate treatment options
- Diagnose and treat hyperkinetic movement disorders such as Huntington's disease, chorea, tics and Tourette Syndrome
- Evaluate the psychiatric aspects of movement disorders and review various treatment options
- Discuss the diagnosis and treatment of dystonia
- Recognize the differences between the various botulinum toxins and their appropriate use
- Determine appropriate candidates for deep brain stimulation and review outcomes and potential adverse events

## REGISTRATION AND FEES

Advanced registration is requested. Fees include course materials, continental breakfast, lunch and refreshments and a syllabus.

Physicians ..... \$100

Non-physician healthcare professionals ..... \$50

Professionals in training including residents, fellows, students ..... \$20

There will be no refunds made for this course.

## PAYMENT BY CHECK, MASTERCARD OR VISA.

## CME CREDIT

### Accreditation

All participants are required to sign attendance rosters at the beginning of the day. A certificate of completion will be provided to all activity participants based on documentation of actual attendance time, meeting minimum attendance requirements specific to the activity, and payment in full. If you are not paid in full, your certificate will be mailed to you upon receipt of payment.

**Physicians:** The University of Kansas Medical Center Office of Continuing Medical Education and Professional Development is accredited by the Accreditation Council for Continuing Medical Education to provide continuing medical education for physicians.

The KU Medical Center Office of Continuing Medical Education designates this live activity for a maximum of 6.0 AMA PRA Category 1 Credits™. Participants should claim only the credit commensurate with the extent of their participation in the activity.

## Cancellation Policy

KU Continuing Education reserves the right to cancel the Movement Disorder Review Course and return all fees in the event of insufficient registration. The liability of the University of Kansas is limited to the registration fee. The University of Kansas will not be responsible for any losses incurred by registrants, including but not limited to airline cancellation charges or hotel deposits

# faculty and planning committee

## CYNTHIA COMELLA, M.D.

Professor of Neurological Sciences  
Rush University Medical Center  
Chicago, Illinois

## KELLY E. LYONS, Ph.D.

Research Professor of Neurology  
University of Kansas Medical Center  
Kansas City, Kansas

## RAJESH PAHWA, M.D.

Professor of Neurology  
University of Kansas Medical Center  
Kansas City, Kansas

## JERROLD L. VITEK, M.D., Ph.D.

Professor and Chairman of Neurology  
University of Minnesota  
Minneapolis, Minnesota

# sponsors

The course is supported by multiple unrestricted educational grants. Sponsors will be recognized at the meeting.

# registration

## movement disorder review course

June 2, 2018 • Colorado Springs, Colorado

Name: \_\_\_\_\_

Specialty: \_\_\_\_\_

Degree: \_\_\_\_\_ Years in practice: \_\_\_\_\_

Number patients followed with movement disorders: \_\_\_\_\_

Address: \_\_\_\_\_

City/State/Zip: \_\_\_\_\_

Phone: \_\_\_\_\_ Fax: \_\_\_\_\_

Email: \_\_\_\_\_

♿ Special needs: \_\_\_\_\_

**TUITION:** \$100 - physicians  
\$50 - non-physician healthcare professionals  
\$20 - healthcare professionals in training

## ► PAYMENTS BY MASTERCARD OR VISA

Name on Card: \_\_\_\_\_

Card #: \_\_\_\_\_

Expiration date: \_\_\_\_\_

## ► PAYMENTS BY CHECK

Make check payable to:

**UNIVERSITY OF KANSAS MEDICAL CENTER**

Detach and mail or fax to:

**UNIVERSITY OF KANSAS MEDICAL CENTER**

**ATTN: Kelly Lyons, PhD**

Parkinson's Disease and Movement Disorder Center  
3599 Rainbow Boulevard, Mailstop 3042  
Kansas City, KS 66160

**PHONE:** 913-588-7159 **FAX:** 913-588-6920

**EMAIL:** movementdisordercourse@gmail.com